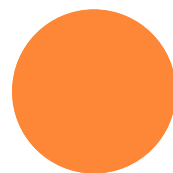


NEONATE DONATION

One Family's Journey
Candace Klitzke, CTBS



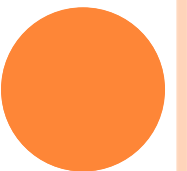
string of
Pearls



STRING OF PEARLS

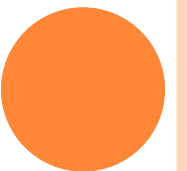
MISSION STATEMENT

- ❑ String of Pearls was created to provide a nurturing and safe place for families as they navigate the path following a fatal prenatal diagnosis that will result in the death of their baby prior to, or shortly after birth. The path between grief and hope is a difficult place to walk; our desire is to provide guidance, compassion and practical suggestions as plans to honor the life of pre-born babies are crafted. Each life has a story worthy of telling and we are here for support as stories are lovingly written.



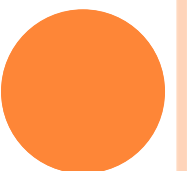
OBJECTIVES OF PERINATAL HOSPICE

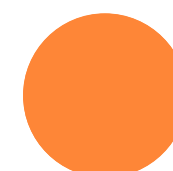
- ❑ Provide unconditional support from point of diagnosis and up to 2 years following delivery
- ❑ Freedom from fear of abandonment
- ❑ Allow parents to fully experience the birth of their child and encourage bonding during the time of pregnancy and beyond
- ❑ Parents will know they treasured their baby's life, no matter how long or short



FAMILY DRIVEN PROCESS

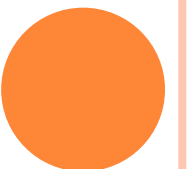
- ❑ Meet on families' terms
 - ❑ Paperwork, blood draws, etc completed at hospital after doctor appointments
- ❑ Education
 - ❑ Eligible tissues
 - ❑ Recovery process
 - ❑ Post recovery
- ❑ Support
 - ❑ Collaborate with String of Pearls





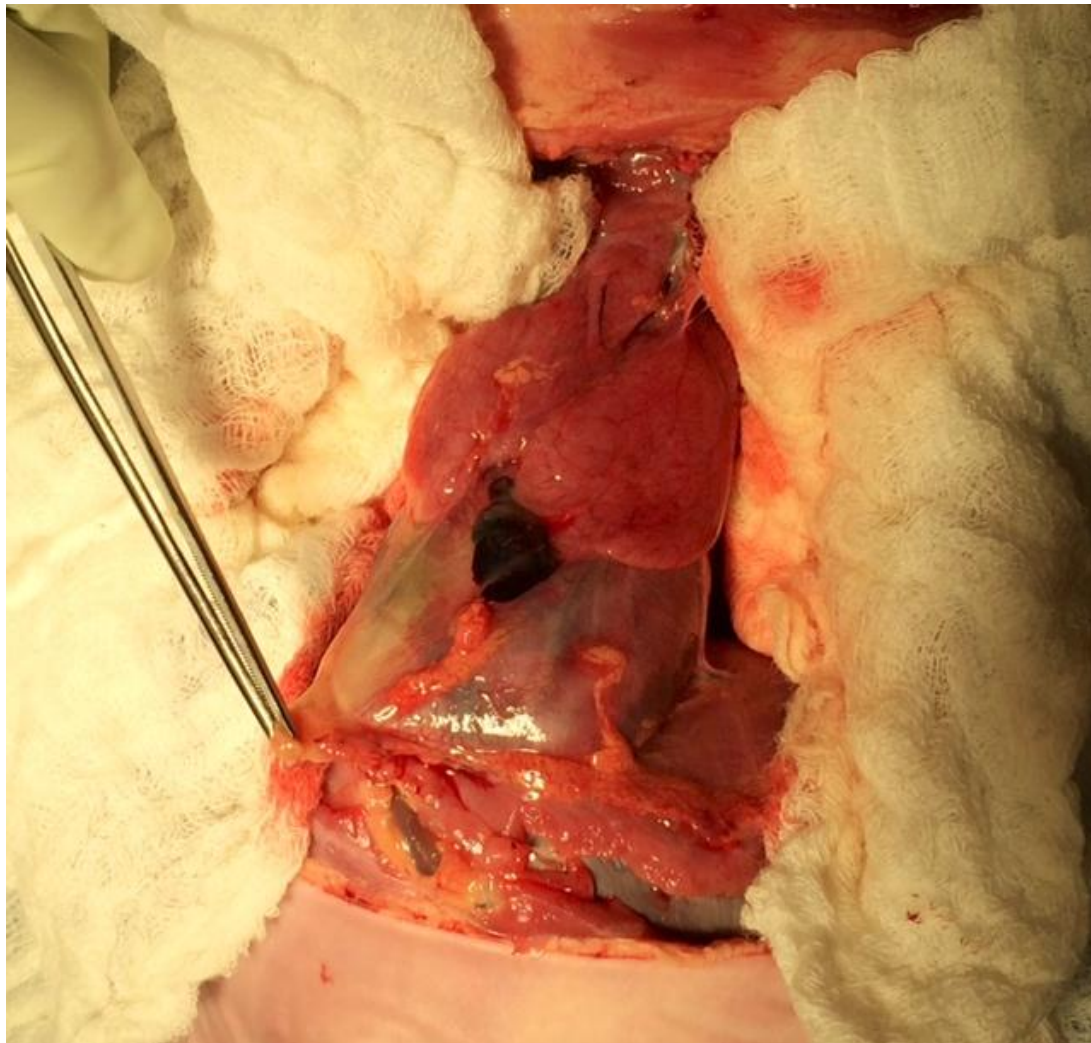
COORDINATION OF RECOVERY

- Clear communication with Hospital Staff
 - Coordinate with OR team
 - Discuss recovery location and time frames
 - Coordinate with RNS and L&D
 - Arrange for family to bring baby to OR for recovery
- Team is “on-call” 24/7 through process
 - Regular updates of delivery and post delivery status
 - Recovery team is not on the unit in most cases

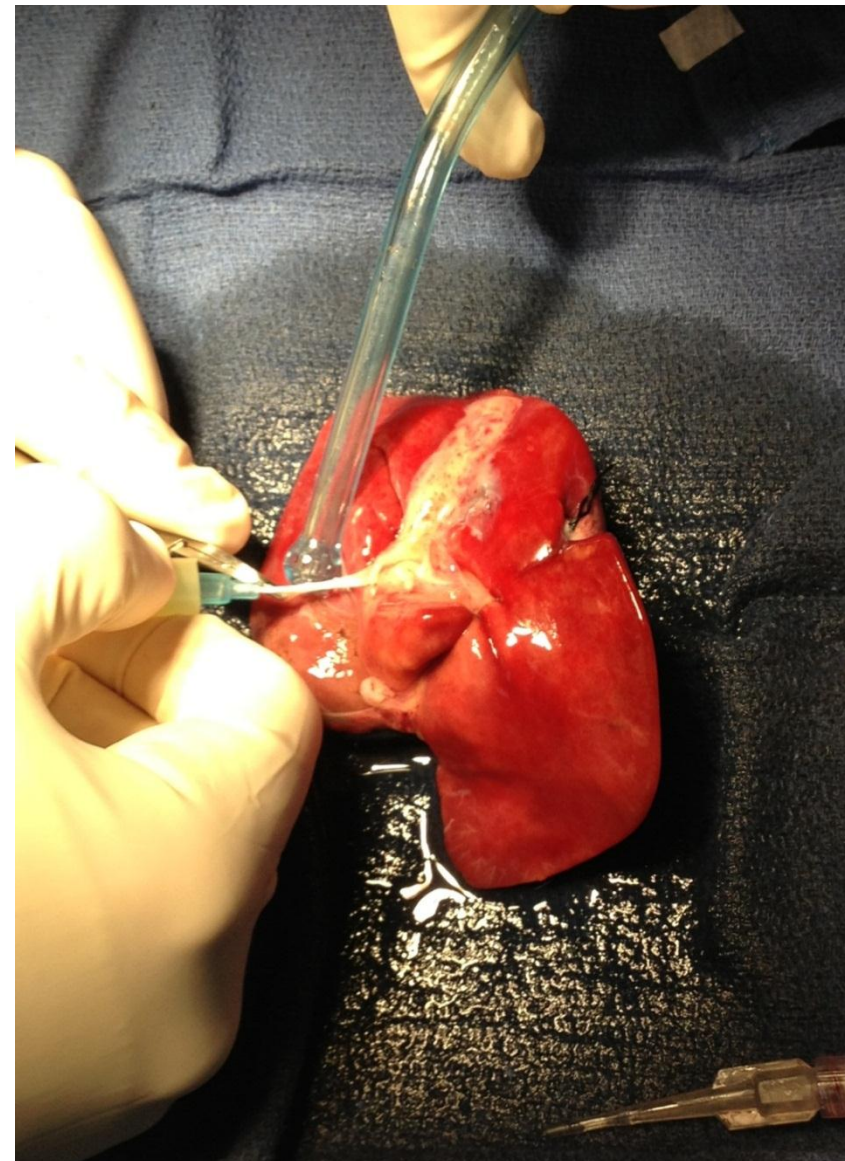


RECOVERY OPTIONS

Pediatric Heart for Valves

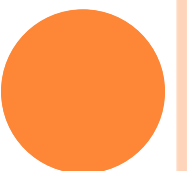


Hepatocytes from Liver



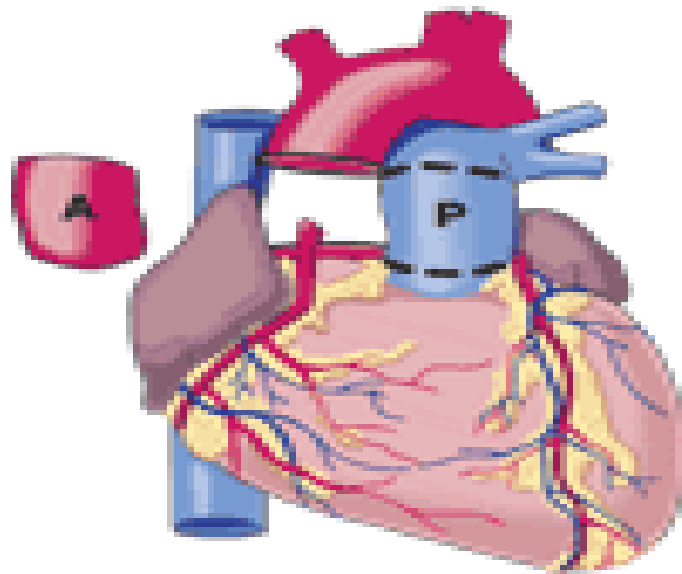
HEART FOR VALVES

- ❑ Pulmonary and Aortic Valve recovered
- ❑ Recovery Time Frame
 - ❑ 24 hrs after cardiac time of death/last known fetal movement
 - ❑ 2.76 kg wt requirement
 - ❑ 36 week gestation
- ❑ Transplant/treatment
 - ❑ Repair valve defects, using methods such as the Ross Procedure
 - ❑ Patch grafts which assist in reconstruction of heart defects
 - ❑ One donor can save up to 2 lives

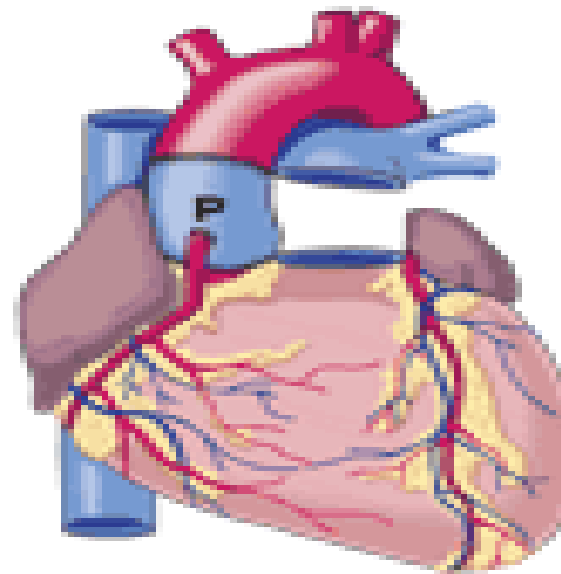


Ross Procedure

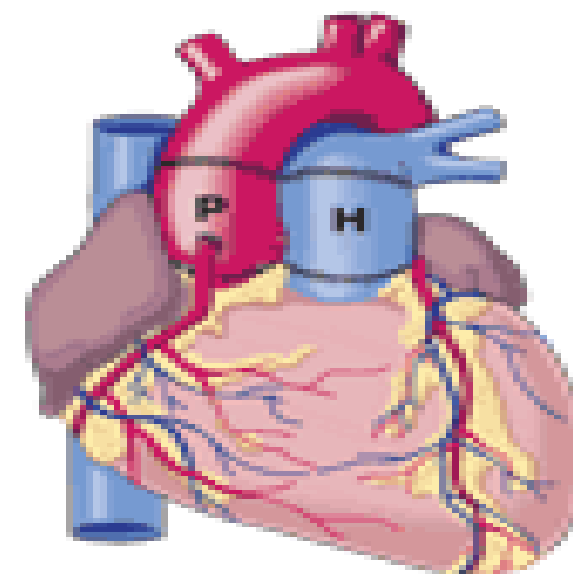
Ross Procedure



The diseased aortic valve and a portion of the aortic artery (A) are removed.



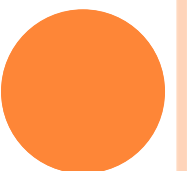
The pulmonic valve and a portion of the pulmonic artery (P) are excised and placed in the aortic position. The left and right main coronary arteries are attached to the pulmonary artery (P).



A homograft (allograft) pulmonary valve and portion of artery (H) are placed in the pulmonary position.

LIVER FOR HEPATOCYTES

- ❑ Liver cell therapy
- ❑ Bridge to transplant
- ❑ Recovery challenges
 - ❑ Liver must be perfused within 3 hrs of asystole
 - ❑ Apgar of 1
 - ❑ 2.2 kg wt requirement
 - ❑ 32 week gestation – 28 days
 - ❑ “transplantable” quality
 - ❑ Trisomy 13 or 18, not acceptable
 - ❑ Anencephalic and congenital abnormalities, generally acceptable
- ❑ Transplant/treatment
 - ❑ Urea Cycle Disorders



NEONATAL LIVER RECOVERY

In the OR recovering liver and heart for valves



The liver is removed and packaged



Urea Cycle Defect in Newborns and Children

- UCDs represent a devastating class of inborn errors of metabolism
 - Complete deficiency typically presents in neonatal period
 - Even with best available medical treatment, very high morbidity and mortality
 - Hyperammonia crises cause neurological damage
 - Less than 20% of patients survive into teen years, most survivors suffer from developmental problems
 - Approximately 1:50,000 neonates have full deficiency UCDs (USA)
- Mortality:
 - 30 - 50% within 1 years
 - 65 - 70% within 5 years
 - Mean IQ of 47
 - Mental Retardation: 79%
 - Spastic Palsy: 46%
 - Multiple Neurologic Deficits: 46%
 - Organ transplantation in newborns is not possible



FAMILY NEEDS

- ❑ Education
- ❑ Clear plan decided before CTOD
- ❑ Balance: cell viability and family's time with the baby
 - ❑ Family is included in the process from start to finish
 - ❑ Father (or other family member) has option to bring baby into OR
- ❑ Option to see baby post recovery
 - ❑ Full reconstruction with dressing placed over incisions
 - ❑ Baby's clothing and blanket placed in a warmer during recovery then dressed to be presented back to family

